





# Are you looking for the world class design and innovative technology of KIOSK?

K-KIOSK is a firm that offers general services regarding the KIOSK System, from design and manufacture of external cases to development of KIOSK contents and solutions. We endeavor to satisfy client's requirements on our products and services as IT environment is changing rapidly.



▲ The corporate lab of K-KIOSK promotes new ideas for innovation and next-generation technical development, encouraging long-term leadership of our firm.

## We offer you an opportunity to experience a wide range of products and manufacturing technologies at the KIOSK show room.

K-KIOSK has a SHOW ROOM that enables users to directly experience and view the simulation of our products, offering a pre-design/product development method to KIOSK users. The conventional way of purchasing products through a website has been supplemented, which provides show room visitors with an upgraded service.



▲ Show Room

Technology surpasses our dream... Towards the value of challenge & innovation!!  
We, K-KIOSK, are here with you to make it come true.

K-KIOSK obtained international standard certificates that meet the overall requirements of quality and environmental control system on design/manufacturing of KIOSK and touch screens and development of web programs from the ICR (International Certification Registrar) ISO9001/14001 - Quality & Environmental Control System



## K-KIOSK ADA Compliant



The Korean Anti-Discrimination and Remedies for Persons with Disabilities Act (Partially Amended: 2010.05.11 No. 10280) When adopting and installing the KIOSK System at public institutions and companies in Korea, the following laws and regulations must be complied with.

We, K-KIOSK, conform to the American ADA as well as the Korean Anti-Discrimination and Remedies for Persons with Disability Act. Considering the case in which wheelchairs are placed near the KIOSK, it shall meet the ADA guideline on ATM range and maximum height.

## K-KIOSK Overseas Export



KORYO KIOSK is famous for its brand, K-KIOSK abroad. With its vision to produce the world class KIOSK, we secured 8 resellers across the continents in 2016 and built storage warehouses. We aim to realize sustainable growth through inland transit of our products to overseas clients, and hope that K-KIOSK shall be able to contribute in enhancing the status of our country in the world.



## 33 A/S centers under operation in 27 cities through out the country

We quickly solve any failures that may occur during the operation at Service Centers.

We classify the failures into detailed categories by class to adopt varying procedures, which allows us to realize efficient, prompt responses to failures, satisfying our clients. Our professional maintenance team applies its best know-how in the relevant field to minimize the failures as much as possible. Regular inspection and maintenance are carried out along with thorough services to maximize work-efficiency and to reduce inefficiency regarding the task given, ultimately to prevent any failures that may be generated as clients use the KIOSK System.



## Metal keyboard

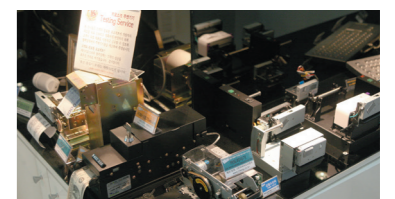
If a client wishes to install a keyboard, K-KIOSK shall in principle install a metal keyboard. Any public and industrial PCs and factory-made KIOSK shall be easily installed, and it is composed of a trackball and a touchpad type. As it is made of stainless steel materials, it is highly sophisticated in terms of its texture and visual appearance. It is also resistant to water, dust and destruction, and since its surface is smooth it is easy to remove any pollutants with a wet cloth. Moreover, a keyboard life test was conducted to improve durability as it may be operable for a long period time.



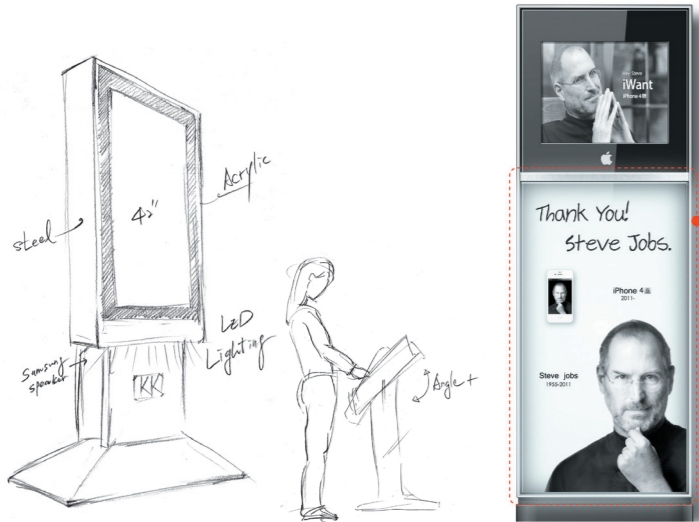
Model : A392TP  
Product Dimensions : W392 × H110 × D122mm

## KIOSK Peripheral Devices Testing service

A Testing Center is located inside the show room of our HQ so that developer's intention can be more accurately and quickly reflected to the critical projects implemented by client(s), allowing such client(s) to simulate and manipulate the devices inside the center. Reservation is required for the service. Please check the device information beforehand.



# Do you need a specially-designed KIOSK with the minimum development cost?

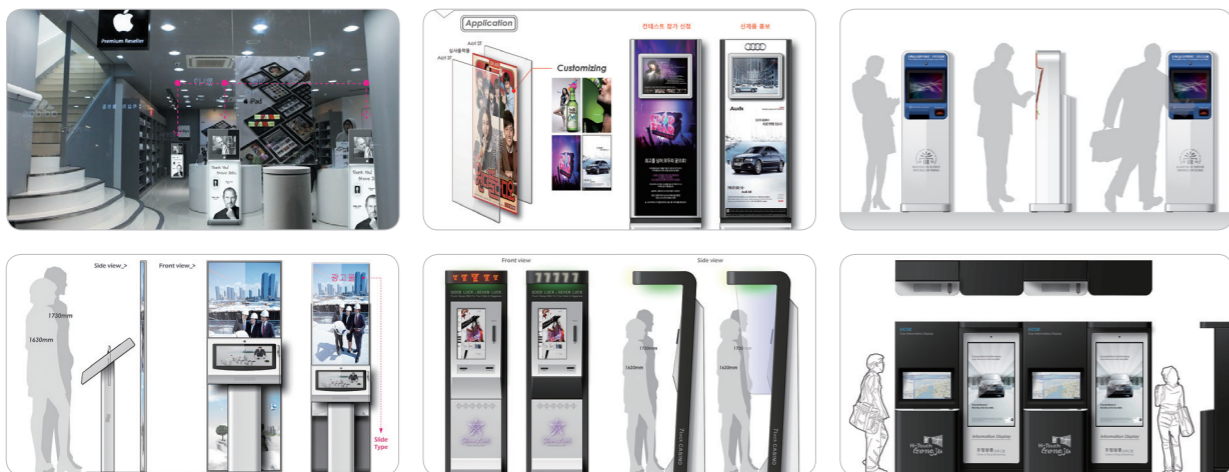


## We offer you with a scientific process.

K-KIOSK prevents non-productive COPQ (Cost of Poor Quality) at the product design/development stage, reduces any waste of time, cost and materials, improves trial-and-error and proposes an objective and scientific process in decision-making after the design concept is deducted, which is the most significant design actualization stage among the design process stages. We offer you with a sustainable, yet creative design process by measuring and verifying the validity and performance improvement against the conventional processes.

## Cost of Poor Quality!

Any additional cost arising from low product quality, in other words, any hidden cost owing to an unexpected event at the KIOSK development stage shall be revealed.



# The Best 'Web Contents' Development Team

Koryo Digiworks Co., Ltd. design team, with 17 years of experience, has the best design and program development special team in this field that is licensed by Korea Software Industry Association and KIDP (Korea Institute of Design Promotion) general multimedia (16 design experts licensed). Also, it currently focuses on KIOSK futuristic digital design research with the help of corporate affiliated research lab and selection of venture enterprise and innobiz businesses in the field of design.

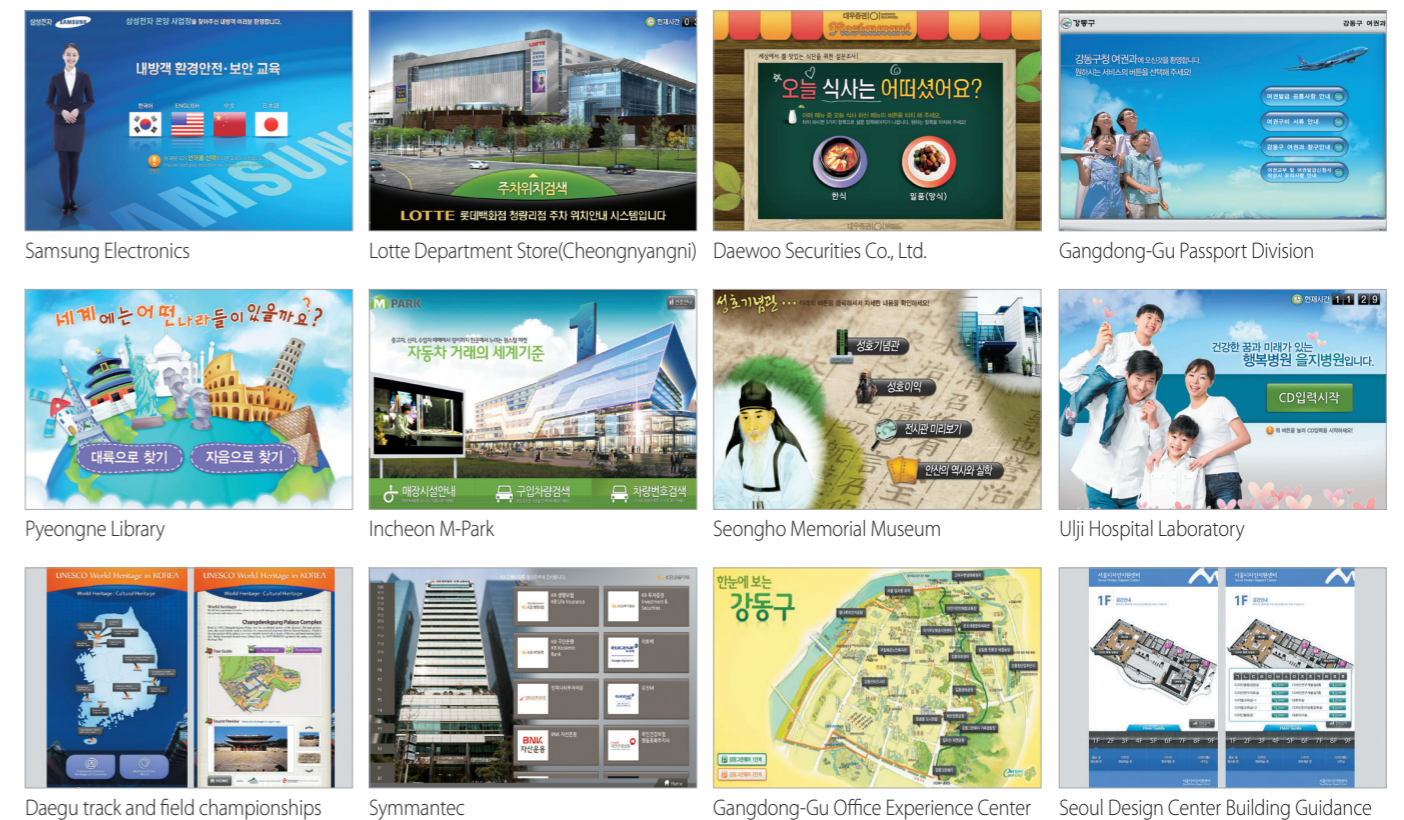
## Holding Technologies of Web Contents Design Team

Kiosk Contents Design / Store guidance system / Parking control system construction / Web Photo System / Flash Game / Flash animation / E-book solution development and production / 3D Motion graphics / Passport and guidance solution / Memorial hall guidance system / Terminal service information system / Training institute guidance system

## Contents Design Project construction flowchart



## Contents Design Team Portfolio



MODEL **Multivision(Digital Signage)**



This advanced display method allows free composition of LED panel (length x width) and displays high quality videos and images with more magnificence and beauty. K-Kiosk is capable of installing cost-effectively with our experience in various cases of construction.

■ Smart signage for video wall of ultra slim bezel

- ▶ Ultra slim bezel, up to 3.5~5.5mm
- ▶ Minimized color deviation with calibration technology
- ▶ Realization of high quality contents with direct LED panel
- ▶ Supports automatic image rotation
- ▶ Network and local scheduling



■ Clear and bright picture, 24/7 duration

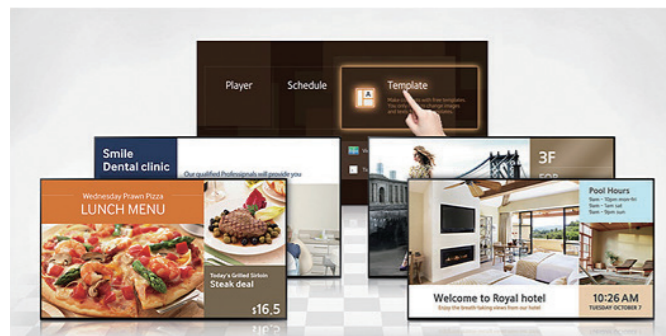


■ More than 100 templates provided



■ Digital Sign - MAGIC INFO solution provided

Magic Info solution for Digital Sign provides templates for beginners and allows easy scheduling and contents generation through network.



■ Watch TV and shop advertisement simultaneously

Functioning as both TV and advertisement panel, its screen can be divided for TV watching or advertisement to maximize efficiency.



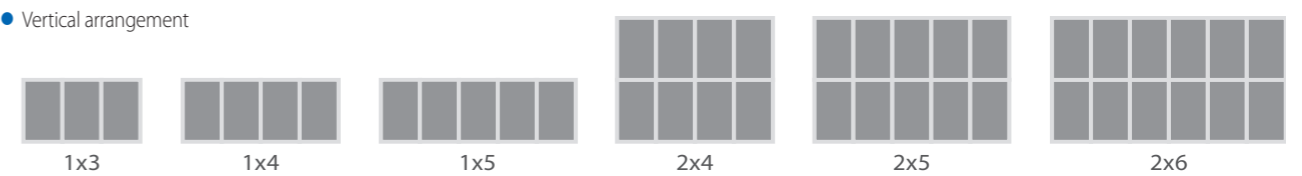
■ Various panel arrangement

Video wall can be organized without constraint, allowing free installation location, and contents arrangement.

● Horizontal arrangement



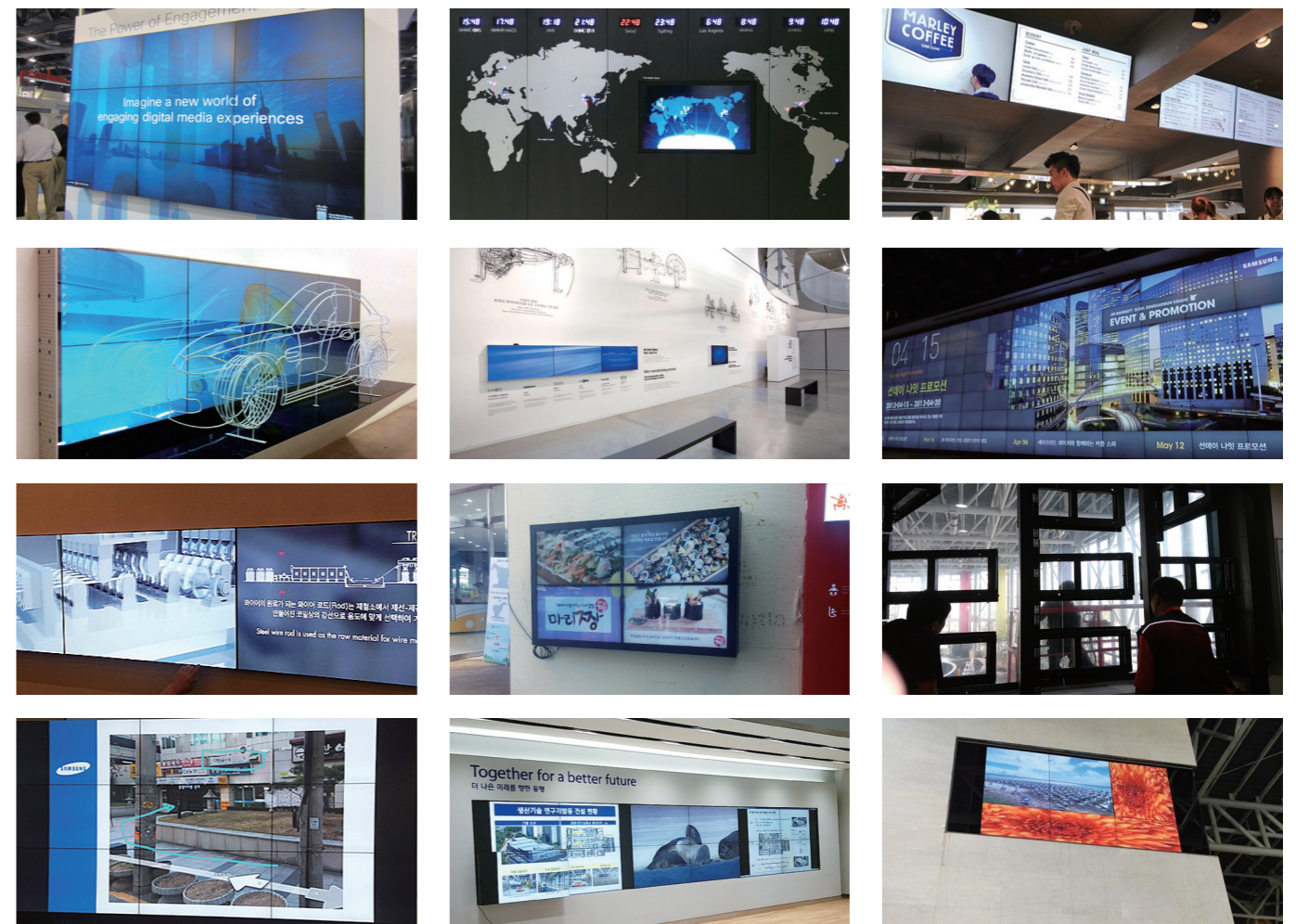
● Vertical arrangement



We are in B2b(Business to business) partnership with Samsung Electronics, and see through every process from development to installation and safe construction.



Through prior on-site visit, we propose installation methods and compute quotation including accessorial costs. By implementing calibration technology and proposing adequate concept for surrounding interior, we minimize color deviation and offer customized solution system regardless of the size of site.



## MODEL K-PARKING Solution



K-PARKING solution automates pre-existing "manned parking management system" with minimum equipment. Its strongest advantage is that it can prevent outsider parking by automating parking management with low price.

### ■ K-PARKING implementable locations

- ▶ small and medium residential complex apartments
- ▶ buildings with manned parking management system
- ▶ newly built villa, shopping center, residential complex buildings
- ▶ shopping centers with frequent illegal parking
- ▶ Buildings where cannot use its pre-existing parking system
- ▶ etc.

### ■ K-PARKING Mobile parking solution through license number recognition

[ Required devices : camera 2, license number recognition solution, IOT board, PC (network/management server), parking gate, vehicle detector]

Visitor vehicle entry : license number recognition(save vehicle information) → park → visit store → register license number for vehicle exit(via mobile, PC) → license number recognition → visitor vehicle exit  
 Resident vehicle entry : license number recognition(use pre-registered information) → park → resident vehicle exit(no need for remote, RFID card for exit)



- ▶ (High-quality type) setting of standards per parking level with generation of history of parking and security
- ▶ Store visitors, registered residents, and outsiders access to automated parking space through license number recognition camera
- ▶ Store visitors can gain exit permit by requesting registration to store manager. Manager then enters license number in POS or mobile app installed in each store.
- ▶ Residents (fixed parking) can enter and exit with registration - remote control or RFID card not needed
- ▶ For outsider vehicles whom not authorized to exit, parking gate does not open. Exit allowed only after confirmation from store or building management office



### ■ K-PARKING Mobile parking solution through encoded key (simple/low-price type)

[ Required devices : Ticket printer(optional), IOT board, PC(network/management server), parking gate, detector, encoded keypad]

Visitor vehicle entry : parking gate open → visit store → vehicle exit confirmation through encoded key (via mobile, PC) → input key number → visitor vehicle exit  
 Resident vehicle entry : tag registered RFID card or use remote controller → resident vehicle exit



2016. Development of LPR(License Plate Recognition)

- ▶ (Low-price type) Parking management by ticket(optional) - confirmation of parking time
- ▶ After parking of store visitors, exit confirmation through encoded KEY, which is installed per store - input visitor keypad upon exit - visitor vehicle exit
- ▶ Just by entering license number in POS or mobile app from each store, store visitors are confirmed to exit.
- ▶ Residents need remote controller or RFID card for parking
- ▶ For outsider vehicles whom not authorized to exit, parking gate does not open. Exit allowed only after confirmation from store or building management office

### ■ K-PARKING characteristics and advantages

- 1. Low implementation cost**  
- Are you concerned of the high price for "automated parking management system"? K-Parking offers monthly installment plan per option
- 2. Control/management of illegal parking by outsiders**  
- By control/managing outsider parking(visitors with no visit purpose), prevents damage and inconvenience caused by outsider parking
- 3. Reduction of monthly building management cost by automated parking system**  
- By replacing the parking lot manager (2 shifts, 1,300 USD) into automation, it reduces more than 2,600 USD a month
- 4. Increase in fairness of parking space distribution**  
- The increase in reissuance of entry card/remote controller results in increase of parking space abuse. We prevent these abuse by parking space management, which results in increase of parking space fairness.
- 5. Increase in convenience of parking space maintenance**  
- By simplifying the system configuration, fault is easily detected, resulting in reduced maintenance cost.
- 6. Convenience in future upgrade**  
- Easy installment of automated payment kiosk as upgrade is available per option
- 7. Immediate feedback by operating customer service center**  
- In case of any fault, call center automatically opens or closes the system remotely

### ■ Specialized visit by K-PARKING expert and customized plan, free of charge



By analyzing the parking lot environment and problems, we propose the perfect solution, customized for each customer.

We renovate your parking lot into automated with minimum cost, time and tools.

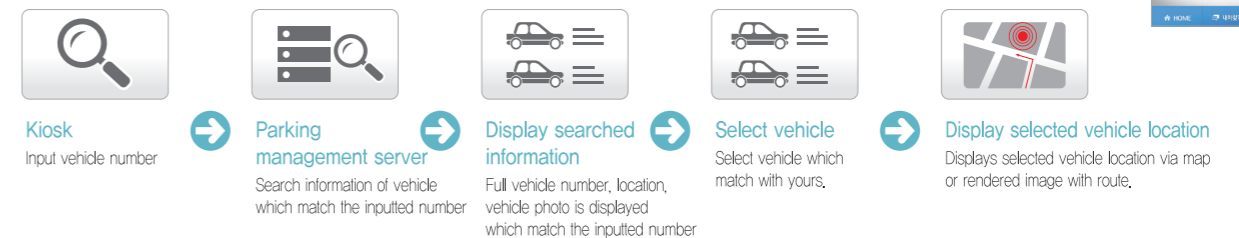
Financial support program for K-Parking solution installation per client/building

## MODEL Parking location guidance solution

KIOSK parking location guidance system, connected with parking control system, indicates vehicle location on map and shows route to the vehicle for the user. It is a necessary system for residential complex apartment, supermarkets, and other buildings with large parking lot where customers may not remember their parking location. It guides customers to the exact vehicle location using the map.



### ■ Process



## MODEL Ticket Issuing Machine

We propose to you creative design process of customized ticket issuing machine with minimum development fee. We are endeavoring towards customer satisfaction, Kiosk and software development for appropriate use such as online reservation system, on-site automated issuing machine, and ticket issuing with payment system.

**Advertising and response screen**

**Part Deposit**

**Returns and ticketing**

**BUSINESS STRATEGY**

■ **We customize our products on your demand.**

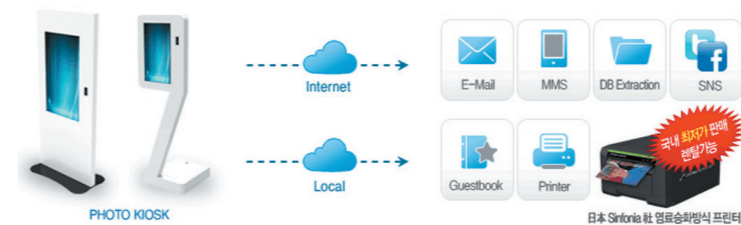
- Automated ticket machine management program (H/W control program, MySQL Database, User Interface)
- IR touch monitor 19"~46" / video advertisement
- Various paper bills, coin insert machine, printer with ejector
- Roll thermal printing method for tickets
- Card readers(customer signature input on touch screen)
- Places for use : public office, church, school, hospital, country club, terminal, and theater

## MODEL Photo Kiosk Solution

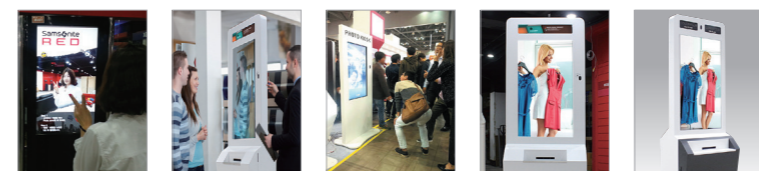
The Photo kiosk solution is a kiosk solution that makes it possible to take a commemorative photo on the spot with just a few touches on various platforms through a real-time web camera and transmit and share it via email, SNS, MMS, etc. It boasts of a 42" large touch screen, fast reaction speed, and ergonomic user interface as a major advantage.

### Photo Kiosk Applications

This solution is available for various events and corporate promotions, such as event venues, new product announcements, seminars, wedding shops, college festivals, theaters, clothing stores, movie premieres, etc.



### Example of the installation of Photo Kiosk



### Example of Photo Solution



### 1. Simple and intuitive interface

This allows for taking a picture with a simple touch to transmit it via MMS, e-mail, and SNS. The touch interface of the photo kiosk made to be easily operated with just a finger touch is intuitive and concise.

### 2. Optimized hardware

The photo kiosk solution has a camera, etc. optimized for hardware of K-KIOSK. This makes the most of the functions of various hardware, such as display, IR touch, and HD camera.

### 3. Joyful marketing

This allows for enjoying the exposure effect by inserting promotional texts and images in the background layout. This makes it possible to place advertising on SNS by just one sharing without paying high advertising costs. After going through a simple consent process, this can be transmitted via MMS and E-mail and used for marketing.

### 4. Customizing

Tailored solution that can be customized, depending on the project. Necessary functions can be added to or deleted from the solution at the request of users. It is available for guest books, as well as photo transmission and sharing.



▶ This model was developed and designed by K-KIOSK pre-made sales and is offered at reasonable price with prompt delivery.

### Ticket issuing machine installation case



MODEL Outdoor Kiosk Model



**Surya, a smart-type air circulation kiosk, is released.**

An outdoor kiosk 'SURYA' boasting superior performance by applying a variety of technologies has received rave reviews from overseas customers through the exhibition and launch event in the Retailtech Japan Show in Japan. Outdoor 'SURYA' realizes the function of perfect waterproof and dustproof through the use of special, dual airfilters, and adopts the constant temperature (heat/cool) and humidity system using artificial intelligence technique by detecting changes in internal temperature and humidity in real time and maintain such temperature and humidity in the best conditions.

**Remote kiosk control via smart phone**

Can monitor the temp., humid. of the outdoor kiosk remotely via smartphone, thus making it easy to diagnose failure symptoms, then controlling the temp., humid. remotely.

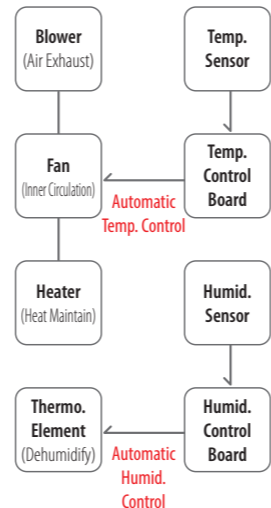


Remote control of kiosk temp., humid. via smart phone

- Outdoor kiosk Surya has minimized the power consumption and environmental problems with a smart air circulation method.
- Our products meet the requirements of international quality and environmental management system standard certification(ISO 9001, 14001).
- Outdoor kiosk Surya has been tested from air conditioned room, which made it certified to maintain constant interior temperature.



● Block Diagram(Temp./Humid.)



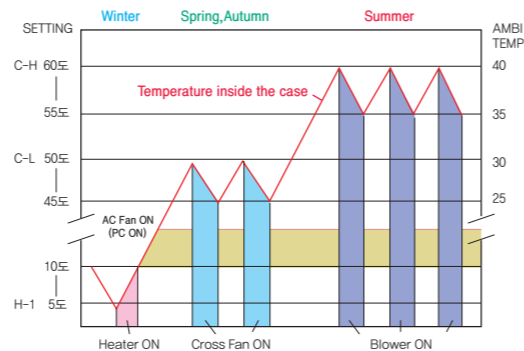
**SURYA-The first to acquire 4 certification [Water-Proof, Dust-Proof, Constant Temp., Humid., electromagnetic waves] within Korea**



**Our products do not adopt the air conditioning method used by other companies.**

1. The air conditioning method is often a problem in summer and has a lot of minor failure because of high wattage.
2. Condensation on the monitor surface occurs due to much difference in Indoor and outdoor temperatures, and there is a problem that temperature around the outdoor unit of the air conditioner rises.
3. Refrigerant used in air conditioning causes an environmental problem because its leak into the atmosphere depletes ozone layers.

● Temperature graph of the heating and cooling element according to the temperature change



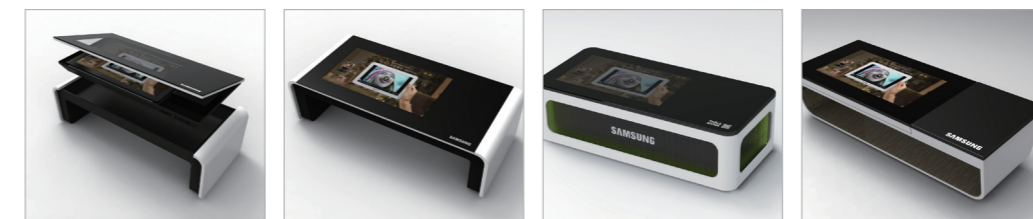
MODEL Table Kiosk Z1



The Table Kiosk Z1 model is an evolved table that allows display, content, advertising videos, unmanned ordering system, etc. on ordinary tables. There is no risk of damage due to attachment of tempered glass to its outside, and a problem does occur to the product despite the flowing of water, beverages, etc. flow thereon. Users can install the multi-touch (10 Point) and feel a sense of freedom and non-restriction. This model can be produced through changed design of the size of panel, the height of the product, etc., depending on its use, and is used in various environments, such as CEO rooms, conference rooms, exhibition halls, hospitals, shops, and restaurants.



▶ 42" Size : 1150(W)mm X 750(D)mm X 710(H)mm



- Very useful for a meeting by teams due to the mounting of tempered glass and 10-point multi-touch of the IR system
- 2-color powder coating (Making gloss brighter and protecting the product from external scratches)
- Has functionality, stability, and chic, and well-suited design at any place, due to an appropriate combination of black and white
- Make all operations simple because monitor control, power switch, volume control, USB port, dual-display terminals, etc. are exposed to the outside
- Make thin yet strong CR steel robusiter through the use of 1.6mm-2mm CR-Steel



# OPEN FRAME - Touch Monitor



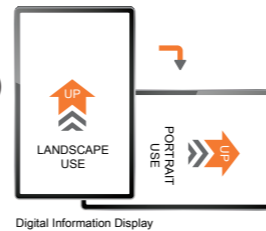
K-Kiosk's industrial Industrial panel, flat panel monitor, touch panel devices, etc., are durability enhanced to adapt to industrial devices. And it's hardware platform are integrated, which makes it easier for customization.

## Application for Open Frame/Touch Monitor

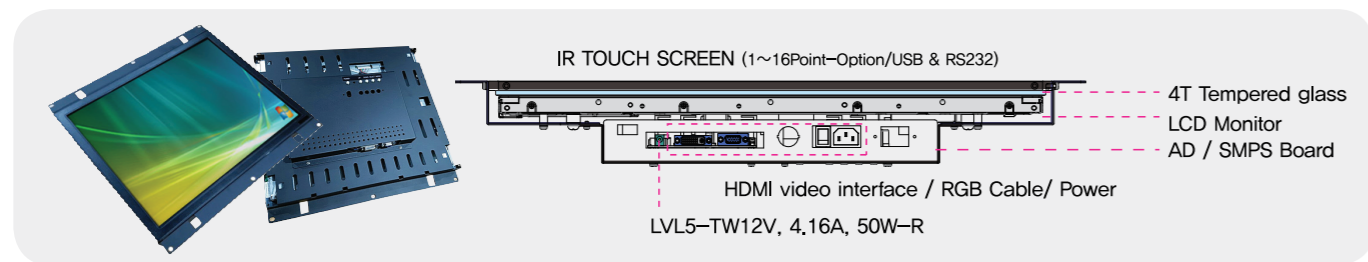
Kiosk, industrial device, medical device, wall display, ATM, digital wall menu board, etc.

## Components for Open Frame/Touch Monitor

- ▶ 19~65 inch industrial display panel(Samsung, LG, AUO)
- ▶ IR Touch Screen(1~16 point finger touch)
- ▶ Industrial display board + power supply unit + OSD
- ▶ 1.2T Case(Powder Coating) + Bracket



## Open Frame Rescue



MODEL	DISPLAY SIZE	MANUFACTURER (Monitor)	PRODUCT DESCRIPTION
KK1943	19"(4:3)	AUO	LCD Open Frame, IR USB touch controller, 1 point touch, WLED, 250cd/m2, VGA & DVI video Interface
KK191610	19"(16:10)	AUO	LCD Open Frame, IR USB touch controller, 1 point touch, WLED, 250cd/m2, VGA & DVI video Interface
KK215169	21.5"(16:9)	AUO	LCD Open Frame, IR USB touch controller, 2 point touch, WLED, 250cd/m2, VGA & DVI video Interface
KK32169	32"(16:9)	AUO	LCD Open Frame, IR USB touch controller, 2 point touch, WLED, 350cd/m2, VGA & DVI video Interface
KK42169	42"(16:9)	AUO	LCD Open Frame, IR USB touch controller, 2 point touch, WLED, 500cd/m2, VGA & DVI video Interface
KK461695	46"(16:9)	AUO	LCD Open Frame, IR USB touch controller, 2 point touch, WLED, 500cd/m2, VGA & DVI video Interface
KK461697	46"(16:9)	AUO	LCD Open Frame, IR USB touch controller, 2 point touch, WLED, 700cd/m2, VGA & DVI video Interface
KK551694	55"(16:9)	AUO	LCD Open Frame, IR USB touch controller, 2 point touch, WLED, 450cd/m2, VGA & DVI video Interface
KK651694	65"(16:9)	AUO	LCD Open Frame, IR USB touch controller, 2 point touch, WLED, 450cd/m2, VGA & DVI video Interface

\* Above product's panel manufacturer/design can be modified upon customer's request, and also we provide drawing as well upon request.



# KIOSK SENSORS & I/O Board

Project development case of I/O board using access sensor, motion recognition sensor, rotary sensor, among other sensors

## Multi-purpose 322/485 communication control board

- Construction case  
Hyundai Motors Rotem Co. / Pyeongnae Library

I/O board  
Multi-purpose 322/485 communication/ 16 channels

Control digital signal with analog signal

- Interface board that can control various functions including ON/OFF of LED indicators or up to 16 different accessories based on information input by keyboard or touch on monitor panel
- Function that can control or manage program/contents of PC by delivering up to 16 analog input information
- Equipped with electric current relay circuit for 16 output sources and is able to run various devices with high electrical consumption without additional parts

## Speed sensor system using rotary sensor

- Construction case : Donghak Peasant Revolution Memorial Hall(Virtual bike experience using chroma-key and others)

Convert physical momentum to electrical signal

I/O board  
Multi-purpose 322/485 communication/ 16 channels

Control digital signal with analog signal

- Senses output of rotary sensor on bicycle for gaming or exercise, and inputs data into PC using 485 communication converter. Produces and operates multimedia contents based on rotation speed.
- By counting number of people entering and exiting using IR sensor instead of rotary sensor and operating contents and relevant accessories based on moving speed of visitors, promotes user's convenience. Can operate or control program or contents

## Screen control system using motion recognition sensor

For inquiries about sensor-related project please contact Mr. Won-Ju Lee (Deputy Head, 7kiosks1@gmail.com)

Screen A

WINNER

Screen B

- When the subject of detection approaches the kiosk, it sends detection signal to the PC to operate/control contents or PC programs
- Functions : (Using various sensors and I/O board) LED on, off/changing monitor screen/kiosk height adjustment/Kiosk rotation(left, right), etc

MODEL **Compact inch KIOSK series**



As one of Kiosk's compact series, it can accommodate small panels, I-Pad, or Galaxy Tab. It is used for issuing of tickets, recognition of employee card, and order card, and its simple and intuitive interface makes for easy use.



MODEL **Super slim KIOSK series**



This super slim model allows attachment of 19"~32" monitor panels and touch panels depending on use. Refer to our various designs.



MODEL **Dual monitor KIOSK series**



While maintaining the advantages of pre-existing dual monitor KIOSK, we added monitor at the top part to avail promotional function. It is attracting popularity as it allows guidance and promotion simultaneously. We offer design modification into various advanced designs.



MODEL **Desktop KIOSK series**



K-Mini, a compact card payment KIOSK, is minimum-sized KIOSK with tablet PC. We design this model on user's demand according to the use.



MODEL **KN24**



KN24 model is automated kiosk usually used for real time guidance and promotion in public offices, banks, airports, supermarkets, and other retail stores. It has touch screen as well as keyboard, RF reader, and printer to be used for web search, receipt issuance, parking guidance, queue ticket issuance, and payment. It has 24 inch monitor and a support board at the front center for bags or other belongings.

▶ 24" Size : 520(W)mm X 430(D)mm X 1360(H)mm



MODEL **KOR19**

KOR19 model is the new sophisticated model of 2016 with its curved front that allows guidance and promotion simultaneously by printed image of the exterior.

▶ 19" Size : 530(W)mm X 360(D)mm X 1700(H)mm





MODEL **K24S**

This model is a slimmer design of the previous KS24 model, which is redesigned and manufactured to be installable at a very limited space. In particular, it is made of a standardized 1.6mm CR-steel material and powder-coated to improve its durability. It is an independent type KIOSK model that stands out for its elegance and sophistication. This product is able to mount a 19" touch monitor, and its inner is designed to be able to be installed with a bare born PC and slim PC. In addition, the inner is also expanded to install various types of devices including a thermal printer, a RF reader, a barcode scanner and a MCR.

▶ 19" Size : 530(W)mm X 360(D)mm X 1768(H)mm



MODEL **KJ24**

The KJ24 model is an advanced kiosk in which a monitor and a mouse are embedded. The mouse is an alternative input method when the existing touch screen alone is insufficient, and also it shows a very appropriate match with housing. Its 24-inch vertical monitor can share more information and can be used for government offices and other work with security film attached at the request of customers.

▶ 24" Size : 520(W)mm X 430(D)mm X 1360(H)mm



MODEL **KW19**

KW19 model is designed by taking an ATM machine as a motive which is easily accessible every day, and it is relatively smaller in size for it is 1480mm in height, manufactured to be useful to a wide range of users. Its Bottom Panel is designed to be as flat as possible for the convenience and movement of users.

▶ 19" Size : 640(W)mm X 790(D)mm X 1633(H)mm



MODEL **K15**

K15 model is a KIOSK terminal manufactured with a 1.6mm CR-steel material and liquid-coated that shows excellent gloss. It has a space to install a slim PC as well. K15 is equipped with an innovative metal cabinet closure, and it is designed to add dignity as stainless steel side poles are installed. Other optional devices can be selected by users, upgrading the model.

▶ 19" Size : 470(W)mm X 550(D)mm X 1550(H)mm



MODEL **KY22**

KY22 is an advanced model made of a standardized 1.6mm CR-steel material, and liquid coated. It is designed to be noticeable as it stands out and is more aesthetic for it is attached with a LED lamp and acryl accessories at the front part. Depending on the client's requirements, a LED touch panel ranging from 22" to 42" can be installed, and the inner is designed to allow installation of a slim PC requested by the client. This model can also be purchased with immediacy.

▶ 21.5" Size : 560(W)mm X 570(D)mm X 1620(H)mm



MODEL **K22 / BP**

K22 is an advanced model made of a standardized 1.6mm CR-steel material, and liquid coated. It is designed to be noticeable as it stands out and is more aesthetic for it is attached with a LED lamp and acryl accessories at the front part. Depending on the client's requirements, a LED touch panel ranging from 22" to 42" can be installed, and the inner is designed to allow installation of a slim PC requested by the client. This model can also be purchased with immediacy.

▶ 21.5" Size : 630(W)mm X 450(D)mm X 1790(H)mm





MODEL **K24SPR**

This model is an extension type model of the K24S model. K24SPR has evolved in the form of the number ticket dispenser and allows for the mounting of a bar code reader, a card reader, and an A4 laser printers, thus making it a model suitable for solutions at hospitals, universities, etc. It is an opening and closing type on its front, and is the model that has the convenience of maintenance and repair, including replacement of paper, and that can mount various devices.

▶ 19" Size : 530(W)mm X 591(D)mm X 1711(H)mm



MODEL **KC17**

KC17 model is a KIOSK terminal made of a 1.6mm CR-steel and is powder-coated to improve its durability, equipped with a space to install a slim PC. KC17 is characterized for its profound taste added to the design as molded side poles are installed, and an optional LED lamp is attached to the lower section so that it can be used depending on its installation location. It is further upgraded since various optional devices can be selected unlike the previous K17 model.

▶ 19" Size : 600(W)mm X 500(D)mm X 1648(H)mm



MODEL **KRT-70**

KRT-70 model can be placed on a shelf, a table or a desk, which can be applied as various types of KIOSK including the Factory Automation System, the Business Automation System or POS System. Basically, it is made of a 1.6T CR-steel and equipped with a space to mount a wide range of devices such as a barcode scanner, a card reader and RFID. Especially, it is installed with a sliding door to insert a mouse, making it a convenient business system.

▶ 19" Size : 560(W)mm X 398(D)mm X 920(H)mm



MODEL **KRI 75-77**



It is a simple yet stable product designed and manufactured for the factory automation system. KRI 75 model is designed/manufactured to be water/dust-proof conforming to the IP45 standards, in order to maintain system stability under any factory conditions. Casters are fixed to the model so that it is easily movable for installation and a space big enough to install various devices including the AVR, SMPS and UPS are secured. Also, a drawer-type sliding door is installed to place a keyboard and a mouse.

▶ KRI 75 19" Size : 560(W)mm X 450(D)mm X 1700(H)mm  
▶ KRI 77 19" Size : 550(W)mm X 422(D)mm X 1603(H)mm



MODEL **KWM19**



The KWM-19 model is 19 inches in size and is a compact wall-mounting kiosk made to facilitate spatial arrangement. As a model exported to the UK, this model is recognized as simple, stable design and is a practical product that can be used easily in manufacturing plants, logistics warehouses, and other places through the application of the metal keyboard.

▶ 19" Size : 530(W)mm X 380(D)mm X 1450(H)mm



MODEL **KAP19**

KAP19 model is focused on modern European design to visually inform the users of its method of use. Violet blue at the front and gray at the rear generate luxurious and neutral arrangement of color to match well with any environment. Sign head with light panel at the top is useful for advertisements and guidance purposes. It is convenient as well, since advertising copy can be changed any time.

▶ 19" Size : 540(W)mm X 371(D)mm X 1481(H)mm



MODEL **Stainless Kiosk**

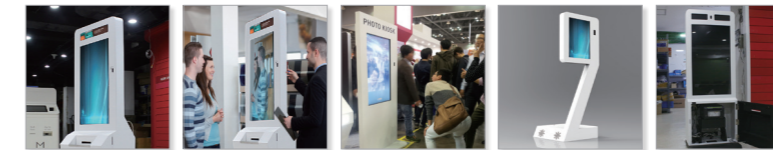
Stainless steel is a steel alloy containing at least 10.5% ~ 11% of chromium. We produce a wide variety of stainless steel kiosks, from design to manufacturing. We mainly use SUS #304(hairline pattern, thickness 1.2mm) for kiosk facade, decoration, accessories. Widely used for each kiosk parts.



MODEL **Photo Kiosk**

The Photo kiosk solution is a kiosk solution that makes it possible to take a commemorative photo on the spot with just a few touches on various platforms through a real-time web camera and transmit and share it via email, SNS, MMS, etc. It boasts of a 42" large touch screen, fast reaction speed, and ergonomic user interface as a major advantage.

- ▶ 42" Standard size : 840(W)mm X 103(D)mm X 1933.5(H)mm
- ▶ 42" Photo Printer installed version : 673(W)mm X 552(D)mm X 1886.2(H)mm



MODEL **Venus 65**



MODEL **KHT42**

KHT42 model is designed as a ticket issuing kiosks, installed with a front door and ticket printer, card reader, ID card scanners, etc., and also is maintenance convenient. KHT42 fits well with places such as terminals, cinema, etc., which needs ticket issuing process.

- ▶ 42" Standard size : 780(W)mm X 540(D)mm X 2075(H)mm



MODEL **Athena**

The Athena 55-inch model is a newest horizontal kiosk design of 2017. It's design is stable and simple. It features a slim yet highly aesthetic design with polished SUS edging on the side. We provide 32/42/46/55/65 inch, according to customer's request.

- ▶ 55" Size : 1410(W)mm X 130(D)mm X 1896(H)mm



MODEL **KH32**

KH32 is a slim, dynamic model that demonstrates the S-line image, designed to allow installation of 32", 42" and 46" LCD Touch Panel. A LED Ad section is attached to the lower section of a monitor to maximize advertising effects and to enhance an aesthetic element of an enclosure. The upper section of a rear part is designed considering the repair and replacement of a monitor for the purpose of easier maintenance and the lower section has a space to place a bare bone PC.

- ▶ 32" Size : 910(W)mm X 630(D)mm X 1303(H)mm
- ▶ 42" Size : 1200(W)mm X 710(D)mm X 1390(H)mm
- ▶ 46" Size : 1280(W)mm X 710(D)mm X 1408(H)mm





MODEL **KDP-Dual**

KDP-Dual model is equipped with a 42-inch monitor on the top which shows advertisement 24/7, and 21.5-inch touch monitor on the center to operate the card ticketing system. To make harmony with the design of the resort, it adopted a European design, which makes it come in at a glance. To easily design and maintain interior devices, the service door is installed in the front side.

▶ 42" Standard size : 800(W)mm X 700(D)mm X 2500(H)mm



MODEL **Media Pole**

Media Pole, designed in 3 levels with the height of 260cm, can be installed in public facilities, outdoor parks, and airports. Two monitors can be attached vertically, and its slim bezel structure allows the upper part to be adjusted to add signboards. To add unity to the front, black mirror was used in every part except the panel with emphasis on modern European design. It is equipped with Samsung's outdoor type panel so it can be used outside. It is both waterproof and dustproof and has brightness of 3,000CD.

▶ 46" Standard size : 633(W)mm X 110(D)mm X 2580(H)mm



MODEL **PKD**

The PKD model is the 21.5" dual monitor, and can have the advertisement effect through company advertising image at its top and is equipped with IR touch at its lower. It also allows for ticketing and card payment after searching for existing members. The model has devices such as card reader, bar code reader, and thermal printer (receipt) installed and is a kiosk that can use in a customized manner depending on the intended use.

▶ 21.5" Size : 670(W)mm X 570(D)mm X 1966(H)mm



MODEL **Zeus**

Zeus model is DID(Digital Information Display) developed for exhibition and promotion. With 42" Full HD display, it boasts of clear and wide viewing angle. At the lower part of the product, light panel maximizes advertising effect, and the front opening door allows easy maintenance.

▶ 42" Size : 730(W)mm X 600(D)mm X 1856(H)mm  
▶ 46" Size : 780(W)mm X 600(D)mm X 1896(H)mm



MODEL **KST23**

The KST23 is designed to best fit in for self service, ticket issuing kiosk within the hospital. The front side is optimized for installation of various devices.

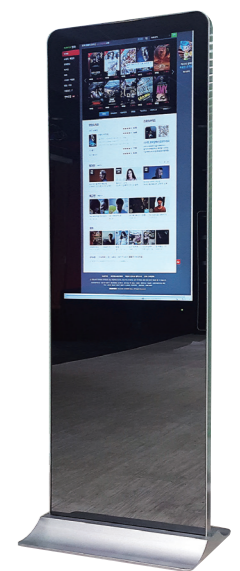
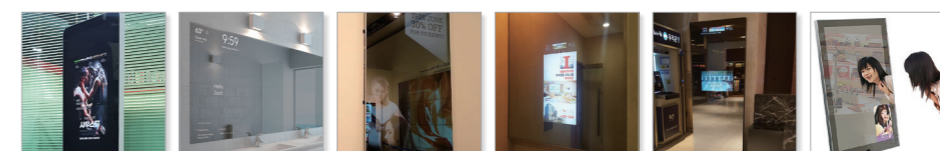
▶ 21.5" Standard size : 530(W)mm X 470(D)mm X 1630(H)mm



MODEL **Magic Mirror**

MMD(magic mirror display) displays contents using special reflection glass above the display panel. It is equipped with motion sensor, which displays advertisement, weather, and etc. on ordinary, but minimize the advertisement to a small screen when approached by people, to make it usable as a full sized mirror. We customize our product according to the installation environment. This model is appropriate for restroom, entrance, beauty parlor, and multipurpose facility.

▶ 42" Stand Type : 640(W) X 60(D)mm X 1,870(H)mm  
▶ 32" Wall Type : 500(W) X 700(D)mm X 800(H)mm  
▶ 42" Wall Type : 610(W) X 70(D)mm X 1,030(H)mm  
▶ 55" Wall Type : 7800(W) X 80(D)mm X 1,320(H)mm



MODEL **KJ-14**



Digital Signage or DID (Digital Information Display) breaks with the existing analogue billboards and makes it possible to use videos and flashes as well as photos, thus being spotlighted as the next generation of advertising means because of easy change in content and low replacement costs. This can be used for path-finding, road guidance, etc. as well as advertising functions, by adding the function of touch. This can be transformed into a wall tapestry, ceiling, and openframe, in addition to stand-alone, and is used in various environments, such as department stores, airports, public institutions, shops, and offices.

- ▶ 55" Size : 870(W)mm X 90(D)mm X 1969(H)mm



MODEL **Helios**



Helios model is a slim-designed, independent type KIOSK model that is made of a 1.6mm CR-steel material with its option of either powder-coating or liquid-coating. As an advanced model, it is sophisticated and elegant, and designed to be noticeable as it stands out and is more aesthetic for it is attached with a LED lamp and acryl accessories at the front part. It supports a wide range of monitor sizes and the inner is designed to fit in a slim PC.

- ▶ 42" Size : 960(W)mm X 601(D)mm X 1930(H)mm
- ▶ 46" Size : 760(W)mm X 650(D)mm X 1920(H)mm



MODEL **Hermes**

HERMES boasts of low power consumption and high image quality through the use of a 32-inch TFT-LED. This has a wide viewing angle and makes it possible to see clearly at any position and express interactive content look well at high reaction speeds. HERMES has a special internal design to prevent the deterioration of performance while reducing the size, as compared with the existing models. Also, this allows for easy, simple replacement of internal devices through modularization of all parts to ensure users can address any functional failure easily, which may suddenly arise.

- ▶ 32" Size : 592(W)mm X 400(D)mm X 1730(H)mm



MODEL **Poseidon**

Poseidon is a model developed to be able to focus on the content more than Zeus, using the full HD LED panel of 55" or higher. This model is designed not to attract a user's eye from anything other than the content, and also designed so it can be repaired and maintained in the back side, not in the front side, to emphasize the simplicity of the product.

- ▶ 55" Size : 900(W)mm X 600(D)mm X 1900(H)mm
- ▶ 65" Size : 1100(W)mm X 600(D)mm X 2150(H)mm
- ▶ 70" Size : 1140(W)mm X 600(D)mm X 2250(H)mm



MODEL **KWM-01**



The KWM-01 model is a model to export to Canada and is designed on the basis of the wall-mounting 46" display size. It is designed simply and very slimly to be installed in various environments, and can graft various multimedia elements through the installation of a separate case at the bottom.

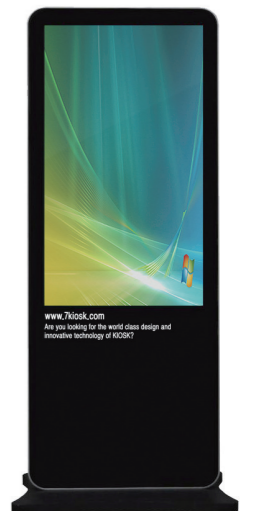
- ▶ 46" Size : 656(W)mm X 76.5(D)mm X 1885(H)mm



MODEL **i-Style**

This has an ultra-slim design that emphasizes simplicity through the use of black silk printing on the front Acryl with iPhone-shaped design. This is the product that has a wide viewing angle using the 42"-46" full HD LED and that is easy to secure space having simple movement methods due to the mounting of a caster.

- ▶ 42" Size : 1200(W)mm X 710(D)mm X 1390(H)mm
- ▶ 46" Size : 1280(W)mm X 710(D)mm X 1408(H)mm



MODEL **KW46**



The KW46-B model is the digital signage designed to allow for installation even at a confined place by making the prior model KW46-A slimmer. This produces interior design to install a barebone PC to minimize weight, and makes it possible to graft various multimedia elements by mounting a separate case on the front part.

▶ 46" Size : 900(W)mm X 690(D)mm X 2100(H)mm



MODEL **Laptop Charging Cabinet**

Laptop Charging Cabinet can charge up to 10 laptops simultaneously. And efficiently controls internal temperature with high-performance fan installed within. Also attached with LED lightings with motion sensor, so when opening the door, it automatically illuminates the interior. Major uses: library, design school, meeting room

▶ Size : 392(W)mm X 122(D)mm X 110(H)mm



MODEL **Wall Type Kiosk**

The wall type kiosk is designed specially for installation in narrow spaces, which makes it perfect for wall advertisement. The exterior of the kiosk may seem simple, but the interior design is far more complicated for wall attachment, wall insertion, convenient maintenance, and so on. With many years of experience, we offer you the best design with minimum damage to the wall, superior safety, convenience, and design.

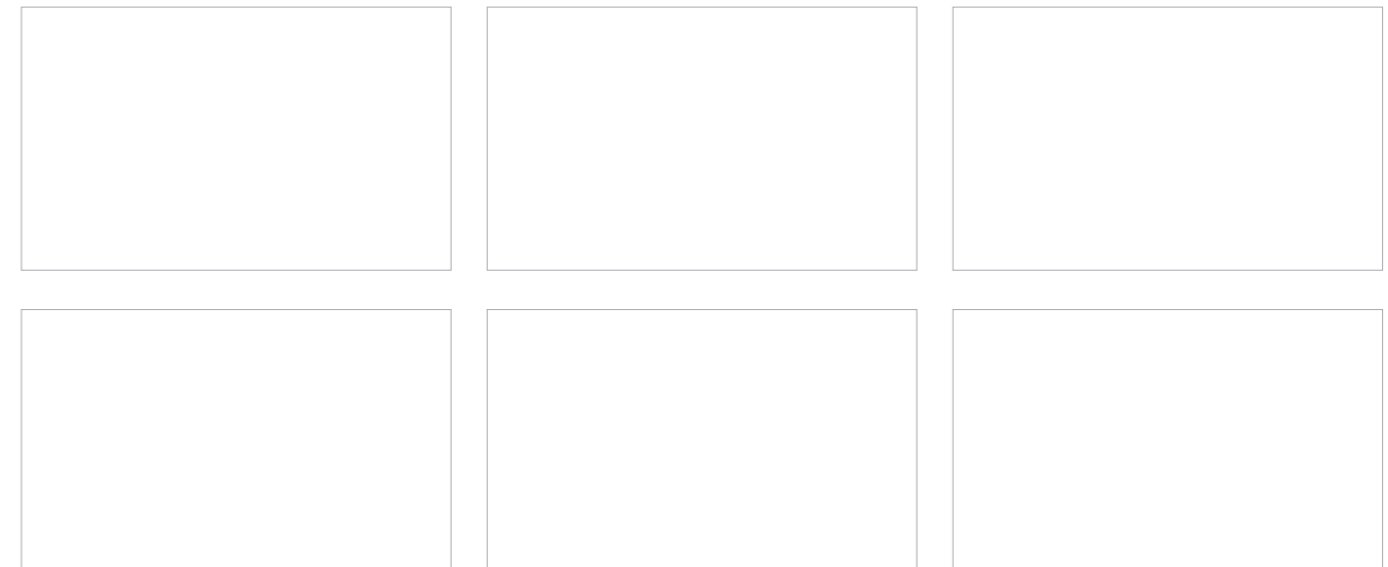
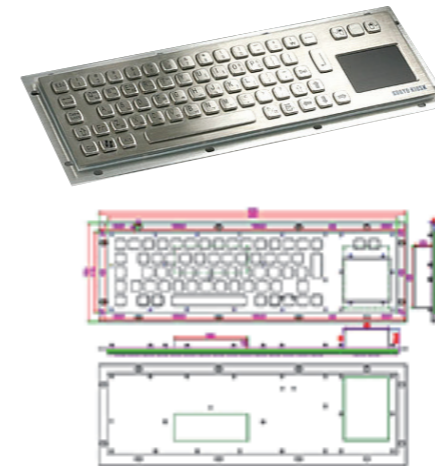
19" 23.5" 32" 42" 46" 55" 65"



MODEL **Metal Keyboard**

Korean-English metal keyboard can be installed in public PCs, industrial PCs, DID, Kiosks, etc. and consists of two types: trackball and touchpad. Its stainless steel material not only satisfies high quality but has the function of strong waterproof, dust-proof, and anti-damage. Its smooth and flat surface allows easy removal of contaminants with a wipe with a damp cloth. In addition, it has been demonstrated through tests that the keyboard can be pressed up to 3,000,000 times, and the keyboard has enhanced durability for the use for long hours. [Type classification] A392TB: trackball type / A392TP: touch pad type

▶ Size : 392(W)mm X 122(D)mm X 110(H)mm



K-KIOSK achieves the KIOSK values that harmonize with the surrounding along with its sophisticated designs applied to a wide range of fields and spaces.



Chennai, India - Exported to Hyundai Motors



Displayed at Tokyo Big Sight Exhibition



Outdoor Kiosk - Displayed at Japan's exhibition



Tax-free Coupon Dispenser in Grocery Stores, Japan



Exported to Japan - Kiosk for mansions



Hyundai Motors in Russia - Direct Installation



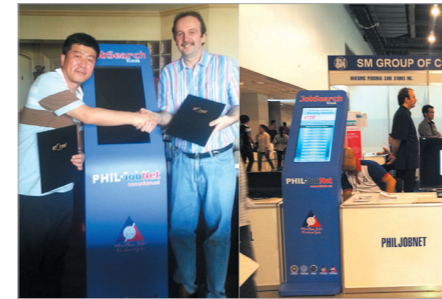
Japan COCOMU



Japan RETAIL TECH 2012 Exhibit



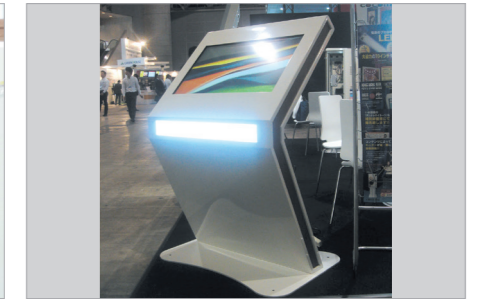
Japan COCOMU



Exported Job Kiosk to the Philippines



Japan's Tax-free Coupon Dispenser



Japan Digital Signage Show



Daemyong Resort Payment System



GATSBY Event Kiosk



Hyundai Uiwang Lab. Video Wall



25EA of Outdoor Kiosk at Jangheung Market Place



Wall display for Canada model house



Thomson Reuters



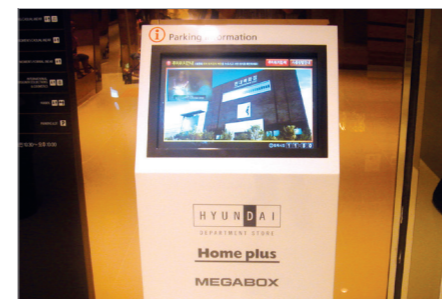
Hyundai Uiwang Lab. Multivision



Paradise Spadogo Multi-Vision



Medical Center Ticket Issuing Kiosk



Hyundai Department Store, Ilsan



Lotte Department Store, Cheongnyangri



Daedong Department Store

Technology surpasses our dream...Towards the value of challenge & innovation!!  
We, K-KIOSK, are here with you to make it come true.



Walkerhill Paradise Casino Kiosk



Opera House in Vladivostok, Russia



Vehicle search kiosk



SKT Roaming Center, Incheon/Gimpo Airport



Samsung Engineering



Highiving Wall-mount Kiosk



EDM Information Kiosk



Korea Gas Safety Corporation, Training Institute



Samsung Care Camp Installation



LG Electronics



HanGlobal Seoul Park event kiosk



M-Park Used Car Search Kiosk



LIG-Training Institute



Golf Club House



SS Group, Lobby



Seoul Design Center Wall-mount kiosk



Health Measure Kiosk



National Tax Service (37 tax offices throughout Korea)



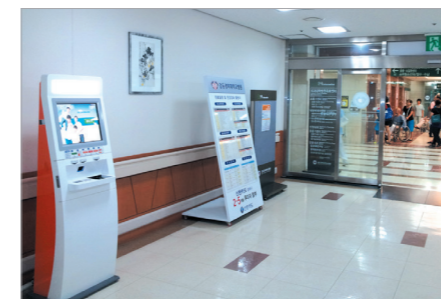
Yonsei University, Wonju Campus



Exhibition Hall Guidance Kiosk



Bibong Memorial Park



Hospital Welfare Service



KIA Motors



National Academy of Agricultural Science

K-KIOSK Toward the vision of "realizing whatever designs the client imagines",  
K-KIOSK shall be your passion, energy and pleasure by satisfying the users'  
requirements on products and services as the IT environment changes rapidly.



Fitness Club Subscription Kiosk



Airport Information Kiosk



Immigration Counter - Information Kiosk



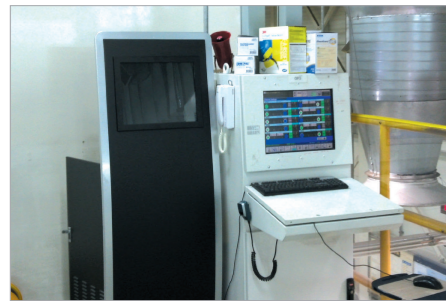
M-Park Used Car Search Kiosk



Cheongna Exllu Tower



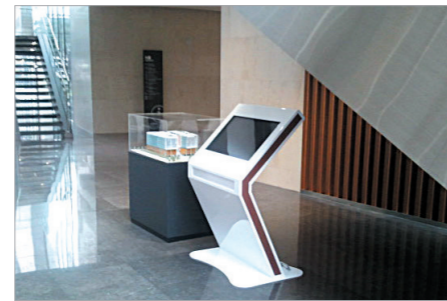
19" Outdoor type information kiosk



Yuhan Kimberly Factory Automation Kiosk



M-Park Used Car Search Kiosk



Information Kiosk



IAAF World Championships Daegu- KIOSK Booth



Event photo kiosk



The Prehistoric Culture Festival of Gangdong, Promotion Booth



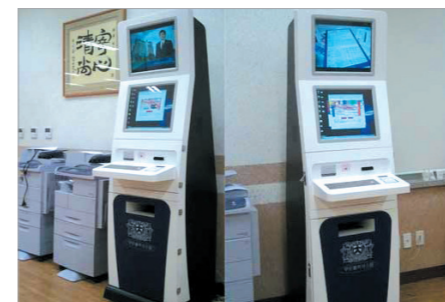
Showroom Airport Immigration Office



KHPN drinking water management system



Hwaseong City Cultural Foundation



Samsung Electronics-Photo KIOSK



GS Caltex- Outdoor KIOSK



Seongnam Joongwon Children's Library



Building Information System



National Assembly Parking Information



W-Fitness Club



LibrarySS Hospital, Automatic Payment/Receipt KIOSK



Nonghyup, Paperless Processing Kiosk



Passenger Ship Boarding Ticket System

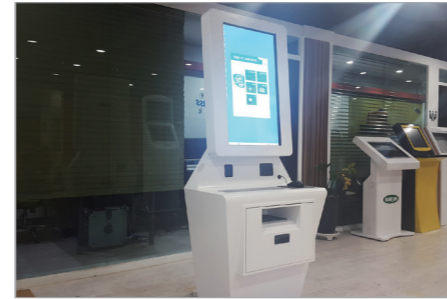
We are proud of our good quality...K-KIOSK



Hospital Receipt Kiosk



Guidance Kiosk



Fish wholesale market, order management kiosk



Park Dong-jin Pansori Research Hall



Roche Korea



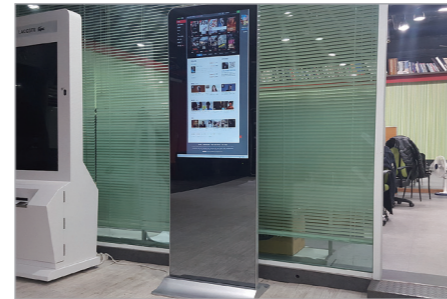
LIG Art Center



Highliving Order-Payment Kiosk



KIA Motors



Mirror kiosk



Factory Automation Kiosk



Exhibition Hall Guidance Kiosk



Appujeong Station, wall mount signage



Job World Information Kiosk



Exhibition Space, Rental Kiosk



Pasteur Research Institute



Samsung Human Resources Development Center



Hospital Information Kiosk



Photo Kiosk Rental



Parking Guidance System



LIG Information System



KISWIRE Showroom Kiosk



Wall mounting Kiosk



Pfizer Inc. Eraxis



Royal Tomb of Muyeol Photo Mail Kiosk



Highiving Goods-Ordering Kiosk



Guidance Kiosk



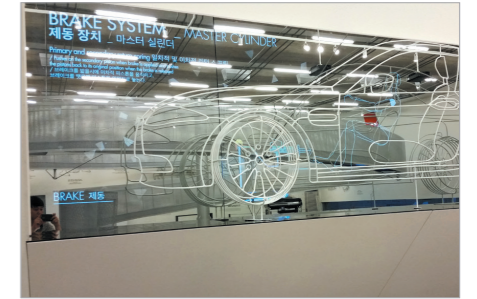
Daejeon Science Museum



Korea Job World Game Kiosk



KISWIRE Showroom - Multivision



KISWIRE Showroom - Use of Magic Miller



Photo Kiosk



Guidance Kiosk



Yongpyong Ski Resort - Coupon-issuing Kiosk



Appujeong Station - Information Kiosk



SBDC IM-Shopping



Hospital Information Kiosk



SK Showroom



Lotte Department Store Photo Kiosk



Hotel Information Kiosk



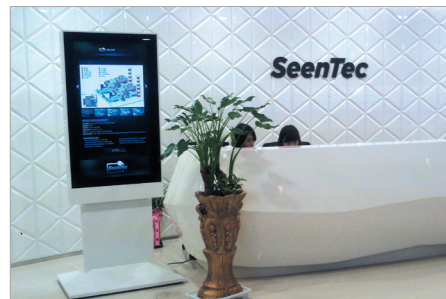
Seoul Cinema Ticketing Kiosk



Kyunghee Oriental Medical Hospital - Media Kiosk



Lotte Department Store



Kyongnam SeenTec



Serajem Hospital Information Kiosk



Hospital Information Kiosk



Samsung Electronic Tube Information Kiosk



Korea Job World Tablet PC Kiosk



Canon Showroom



Boryong Central Market



Shipping Association Payment Kiosk



Intercontinental Hotel Conference Kiosk



Ski Resort Ticket Issuing Kiosk



Philippines Job Kiosk(Visit of Philippines President)



Univ. Hospital Card Receiver



Daeyang CIS Payment System



Michelin Product Advertising Kiosk



Hyuksan Sportcenter Customer Management



Yongpyong Ski Resort Ticket Issuing Kiosk



Parking Information Kiosk



JTBC Photo Kiosk



Model House Information Kiosk



CD Register



Finance Tower Building Guide Kiosk



Security Education Kiosk



Nonghyup Hanaro Mart Kiosk



Sangju Mineral Spring Outdoor Kiosk



Outdoor Wall Type Kiosk



Yaskawa Information Kiosk



Pfizer Kiosk



Exhibition Guide Kiosk



Hospital Information Kiosk



Movie Ticket Issuing Kiosk



Outdoor Kiosk Surya



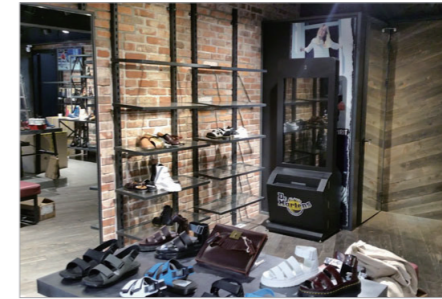
Hospital Barcode System



Industry Customized Kiosk KW19



Daemyung resort TICKETING KIOSK



Dr.Martens PHOTO KIOSK



Gwangjin-Gu passport registration kiosk



Univ. Library Seat Reservation Kiosk



Univ. Library Information Kiosk



Mongolia(Envico) Export Kiosk KH42 6EA



Gyeongsang National University hospital INFO KIOSK



Homepage Information KIOSK



Hongik Univ. Station Passport realization KIOSK



2016 Korea Electronics Show



AT center Information KIOSK



Banpo ACRO RIVER PARK info KIOSK



Hospital Info KIOSK



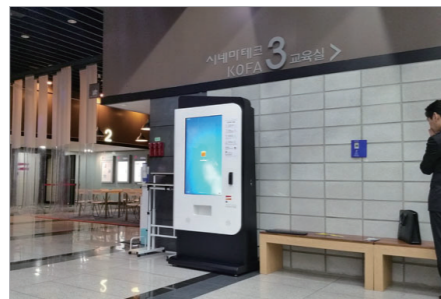
HYUNDAI cultural center



Hyundai-Autoever VIDEO WALL



BUSAN UNIVERSITY OF FOREIGN STUDIES INFO Kiosk



Cinema Tech Ticket KIOSK



COEX parking control system KIOSK



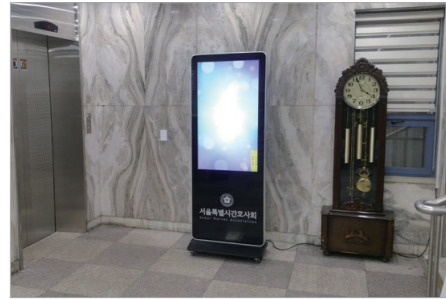
Ilсан Lake Park Info KIOSK



Incheon AIR PORT auto quarantine system KIOSK



Incheon Airport the checkpoint KIOSK



INFO KIOSK



INFO KIOSK



Information KIOSK



Raemian Godeok palace fitness center



Road KIOSK



Safe Birth Delivery Showroom Kiosk



Keypad kiosk



Medtronic Showcase Kiosk



Meeting Room Table KIOSK



Search KIOSK



SEOUL ASAN MEDICAL CENTER INFO KIOSK



Seoul City Hall PHOTO KIOSK



Customized Dual-monitor Kiosk for Laboratory



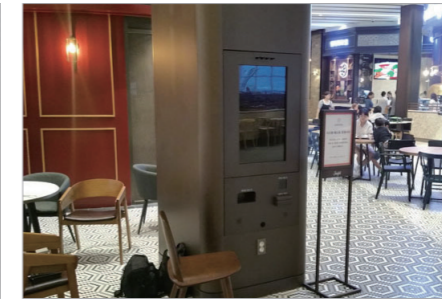
MEGA BOX multivision



Mirror DISPLAY



Seoul city hall Plaza event KIOSK



STARFIELD Payment Kiosk



Subway Library Ad. Kiosk



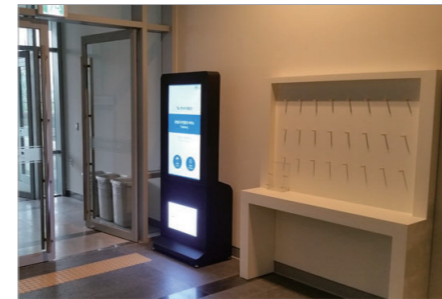
Photokiosk (Event quiz)



Pyeongchang Olympic KIOSK



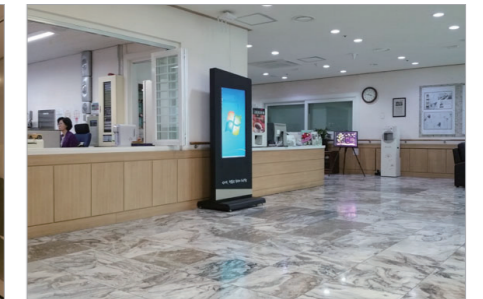
Raemian Daechi palace fitness center



Taxation Museum INFO KIOSK



Wall Touch screen KIOSK in company



Yong-san old man sanatorium INFO KIOSK



## Be a K-kiosk business partner right now!!

Be insured your success by participating in our partnership



### K-KIOSK PARTNERSHIP INFORMATION

#### Use diverse benefits K-kiosk provides for your business success.

We are sharing the business with several partners. We want to grow and develop with passionate partners in the field of technical partnership, design, plan, manufacturing, and sale. You will soon discover how we can help you with streamlining operation, expanding sale, and practicing the skill for you to enter into high-growth field.



#### The value to be obtained through Partner Program

If you cooperate with K-kiosk, you cooperate with industry-leading company which has better experience than one of any other information technology company.

#### For your offering

- \*Perform more intelligent affair.
  - \*Secure competitive edge
  - \*Capture and obtain new insight to induce and maintain the success
- Reorganize you business by cooperating with K-KIOSK through skill obtainment, business, and customer satisfaction. K-kiosk compensates for your investment through the higher-value support.

#### Membership level



It is a systematic framework providing useful benefit to help with partner's business success and make mutual relation more close. We can improve partner level by proving success and obtaining the point through platinum partner, certified partner.

- \* Expertise test, business and skill certification
- \* Profit creation
- \* Present success cases
- \* Obtain a high level of customer satisfaction

[Thank you for being interested in our K-kiosk partnership program.](#)

Please fill in the application for admission and present us the outline of you and your company. Thank you for choosing K-KIOSK.

**Inquiry e-mail for partnership :** [7kiosks1@gmail.com](mailto:7kiosks1@gmail.com)

 [www.facebook.com/7kiosk](https://www.facebook.com/7kiosk)  
www.k-kiosk.com  
www.7kiosk.com

 [jp.7kiosk.com](http://jp.7kiosk.com)

COPYRIGHT KORYO DIGIWORKS ALL RIGHTS RESERVED. VOL. 11 / 2017



## KORYO DIGIWORKS CO., LTD.

Samjin B/D, 1393, Yangjaedaero, Gangdong-Gu, Seoul, Korea  
TEL. 82-2-488-2305, 82-2-488-2301 FAX. 82-2-486-3758  
[www.k-kiosk.com](http://www.k-kiosk.com) National A/S Center 070-8228-3500